



KONSOLIDATOR

Solutions

Systems that stand up to the toughest wastewater challenges



Market-Driven Solutions

The Ultimate Ultrafiltration System for Industrial Wastewater

The KONSOLIDATOR system delivers, even in the most demanding industrial environments.

Complete Solids Tolerance Solutions

Koch Membrane Systems offers a wide range of ultrafiltration products to meet any application challenge.

TARGA® II

Up to 50 mg/L

PURON® MP

Up to 1000 mg/L

PURON® HF

Up to 3,000 mg/L

PURON® MBR

Up to 15,000 mg/L

ABCOR®

Up to 500,000 mg/L

The KONSOLIDATOR System Advantage:



LESS DOWNTIME – Virtually uncloggable tubular membranes minimize downtime associated with frequent cleaning cycles, sludging and repair.



REDUCED HAZARDOUS WASTE – Recycling wastewater streams, process materials and concentrating hazardous wastes helps to minimize treatment and disposal expenses.



LESS CHEMICALS – A high solids and pH tolerance combined with mechanical cleaning reduces the need for flocculants and other chemical pretreatments.



SIMPLE OPERATION – Minimal system connections, an intelligent user interface and outstanding membrane reliability make KONSOLIDATOR one of the easiest-running filtration systems available.



SAVE MONEY – Lower waste disposal, chemical treatment, labor and maintenance expenses add up to cost savings for you!

Primary Applications:



Metal Working Industry

- Eliminates the need for sludge-producing flocculants.
- Provides a physical barrier that precipitated metals cannot penetrate
- Permeate typically meet applicable discharge requirements



Food & Beverage Industry

- Allows the recovery and reuse of food processing by-product waste streams
- Permeate exceeds discharge requirements for most municipalities
- Able to handle greases & fats, emulsified oils, bacteria, viruses & biological organics



Oil & Gas Industry

- On-site effluent treatment
- Water and wastewater reuse
- More flexible water management



Pulp & Paper Industry

- Economical solution for wastewater reuse
- Tolerant of inks, dyes, pigments & coatings
- Lower water dependence

Meaningful Product Features

Reduce operating costs with high-efficiency wastewater treatment.

The KONSOLIDATOR system, incorporating FEG PLUS or ULTRA-COR® tubular ultrafiltration (UF) membranes, provides an efficient, compact way to treat difficult industrial wastewater.

The KONSOLIDATOR System Design

Wastewater contaminated with emulsified oils, grease, heavy metals, and suspended solids represent a costly disposal challenge. Streams treated by the KONSOLIDATOR system are often clean enough for factory reuse, offering a safe, economical and environmentally friendly alternative to discharge.

Simple, fully-automated user interface

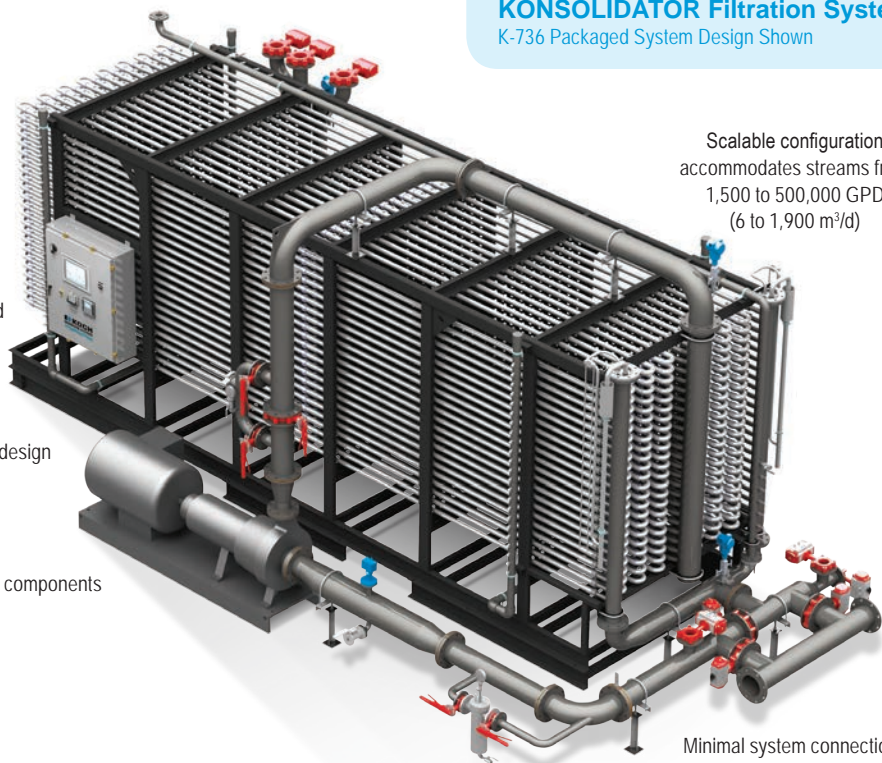
Self-contained, skid mounted system design

Robust system components

KONSOLIDATOR Filtration System K-736 Packaged System Design Shown

Scalable configuration accommodates streams from 1,500 to 500,000 GPD (6 to 1,900 m³/d)

Minimal system connections for easy installation



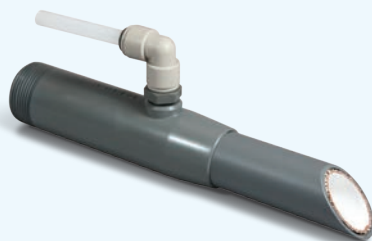
Virtually Uncloggable ABCOR® Tubular Membranes

Robust open-channel configurations handle extremely high suspended solids loads

The ABCOR Advantage:

- High pH tolerance
- Consistent permeate quality
- Resist plugging
- Tolerates high temperatures
- Available with CPVC or SS shell
- Available in neutral or negatively charged chemistry
- Upset Tolerant

FEG PLUS Tubular Membranes



Durable and mechanically cleanable for use on wastewaters containing high concentrations of suspended solids. Ideal for automotive parts manufacturing, metal fabrication and finishing applications.

ULTRA-COR® Tubular Membranes



Withstands high cleaning temperatures and pH extremes with superior chemical stability. High permeate rates and improved energy efficiency compared to other tubular membranes.

The KONSOLIDATOR Solution

Our best-in-class designs provide a truly integrated solution, from membrane chemistry and fabrication to process and application design, with dedicated technical support every step of the way.

KMS isn't just a membrane company. The KMS global team of Design Specialists is ready to assist you with:

- Process & System Design
- Project Management
- Mechanical Design
- Global Fabrication
- Start Up and Commissioning
- Piloting
- KMS ASSIST® Service and Maintenance Program

Piloting – Unique solutions are our specialty...

Not all process streams are alike. New and specialized applications can benefit from pilot testing to validate system designs.

Our Process Technology Group stands ready to support those applications that require more process expertise, attention or testing. With a sizeable inventory of pilot systems in our fleet, a unique testing program can be up and running at your facility in a matter of days.



Contact your local Koch Membrane Systems representative for more information:

Corporate Headquarters

Koch Membrane Systems, Inc.

850 Main Street
Wilmington, Massachusetts 01887-3388
USA

Tel: +1-888-677-KOCH

Tel: +1-978-694-7000

Fax: +1-978-657-5208

International Offices

Europe/Middle East/Africa

Aachen, Germany
Dubai, UAE
Lyon, France
Madrid, Spain
Rogierowko, Poland
Stafford, United Kingdom
Vimercate, Italy
Wijnegem, Belgium

Asia/Pacific

Beijing, China
Mumbai, India
New Delhi, India
Shanghai, China
Singapore
Sydney, Australia

Latin America

Sao Paulo, Brazil

For complete contact information, visit:

www.kochmembrane.com

KOCH
MEMBRANE SYSTEMS

